

The ECS80 Series are split-core current transformers. The CT can be mounted to existing panels, such as control centers or load centers, to measure or monitor wattage. These CTs can be mounted without removing existing cables for easier installation.



Electrical Specifications

MODEL	INPUT CURRENT	AVAILABLE OUTPUT
ECS80-500	500 A	CURRENT OUTPUTS @ 20mA, 40mA, 50mA,100mA,1A, 5A VOLTAGE OUTPUTS @ 0.25V, 0.33V, 0.5V, 1V, 2V (can be customized by customer)
ECS80-600	600 A	
ECS80-800	800 A	
ECS80-1000	1000 A	
ECS80-1200	1200A	
ECS80-1600	1600A	



APPLICATIONS

- Energy and sub-metering products
- Electrical load monitoring
- Network equipment
- Instruments and sensors
- Control systems
- Go GREEN initiatives

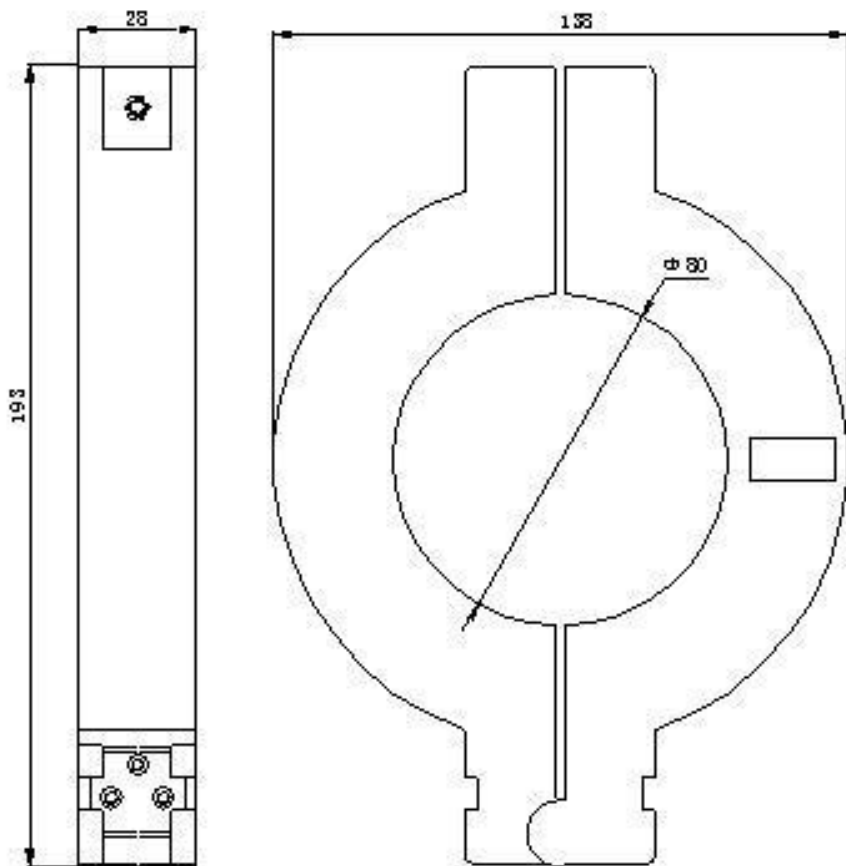
FEATURES

- 3.15" window opening (ID)
- Custom design Turns-Ratio available
- Rigid housing case with UL 94V-0 durable plastic
- M4 terminal output
- Approximate weight 550g

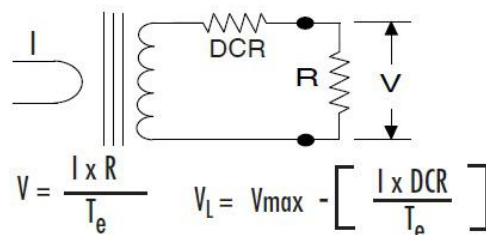
SPECIFICATIONS

- Standard Input Current 5-1600A
- Frequency 50Hz — 400Hz
- Standard accuracy 0.5,1,3
- Insulation Voltage 4000 Vac/1min
- Operating Temp. -40°C to +60°C
- Storage Temp. -45°C to +85 °C
- ANSI C57.13 and IEC61869-2 Standards

Mechanical Dimensions in mm



Connection Diagram



CAUTION

Before installation, safety precautions must be followed by licensed professional. Never energize primary unless short circuited terminals or burden connected to secondary.